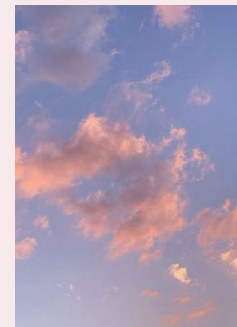
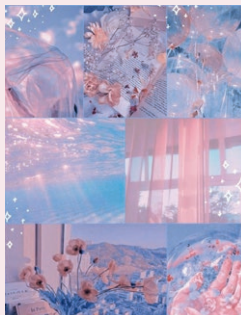
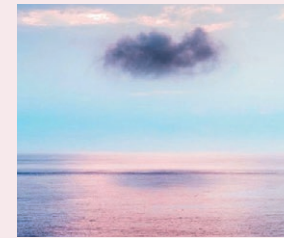
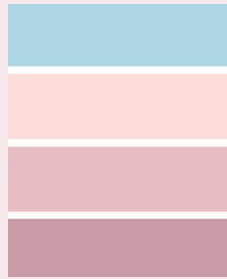
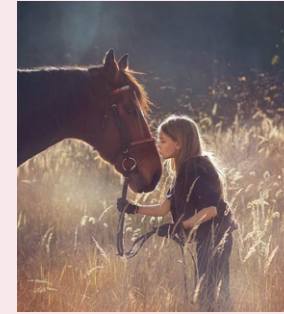


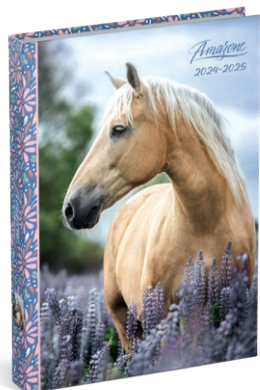
AMAZONE



Amazone



HORSES ARE INTELLIGENT AND EMOTIONAL BEINGS, JUST LIKE US HUMANS. NO WONDER, SOME OF US, CAN'T GET ENOUGH OF THEM.



1. SCHOOL DIARY INTERNATIONAL

553324 | Size: 125 x 175 mm,
1 day/page, 11 languages, standard interior
Features: matt lamination



2. SCHOOL DIARY INTERNATIONAL

553331 | Size: 125 x 175 mm
1 day/page, 11 languages, standard interior
Features: matt lamination



3. RING BINDER A4

2R: 553355 | 4R: 553348 | 23R: 553362
Features: spine 4,5 cm,
matt lamination



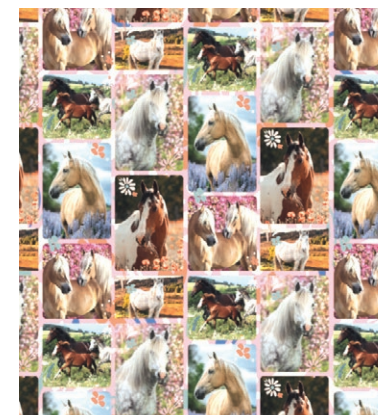
4. ELASTIC FILE A4

553379
Features: matt lamination



5. SCHOOL LABELS

553386
Features: set of 16 labels



6. BOOK WRAPPING PAPER

553393
Size: 100 x 70 cm
Features: 2 sheets



7. PEN CASE ROUND

554772 | Size: 21 cm
Features: polyester, heat transfer print,
metal zipper puller

BELGIË & LUXEMBURG

Xavier Bertein

Sales manager

BELGIË & NEDERLAND

—

xavier.bertein@lannoo.be

T +32 (0) 474 48 44 94

Katrien Mistiaen

Key account manager

—

katrien.mistiaen@lannoo.be

T +32 (0) 497 02 58 53

Stefan Corens

Account manager

ANTWERPEN, LIMBURG & VL BRABANT (BE)

—

stefan.corens@lannoo.be

T +32 (0) 497 59 35 02

Tars Wyckstandt

Account manager

OOST- & WEST-VLAANDEREN & VL-BRABANT (BE)

—

tars.wyckstandt@lannoo.be

T +32 (0) 473 54 38 18

Pierre Fages

Account manager

BRUXELLES, LA WALLONIE (BE) & LUXEMBOURG

—

pierre.fages@lannoo.be

T +32 (0) 491 23 11 73

NEDERLAND

Mascha Pieterse

Business Development & Key account manager

NEDERLAND

—

mascha.pieterse@lannoo.be

T +31 (0)6 23 77 17 54

Bart Komin

Account manager

MIDDEN- EN ZUID-NEDERLAND

—

bart.komin@lannoo.nl

T +31 (0)6 82 80 80 11

Olaf Heijman

Account manager

NOORD- EN OOST-NEDERLAND

—

olaf.heijman@lannoo.nl

T +31 (0)6 21 67 91 81

INTERNATIONAL

Katrien Mistiaen

Key account manager

SALES INTERNATIONAL

—

katrien.mistiaen@lannoo.be

T +32 (0) 497 02 58 53

Christophe Prime

Account manager

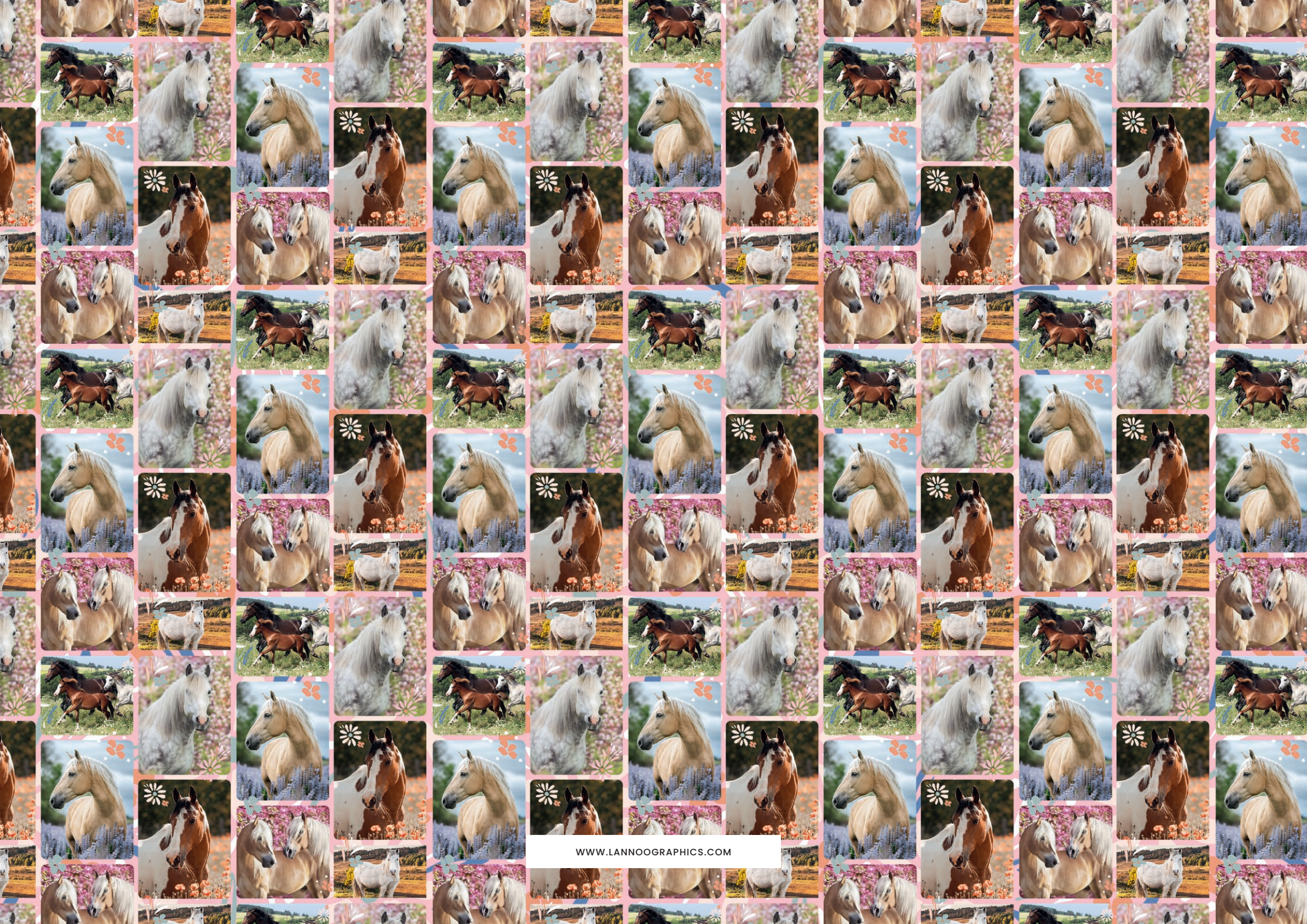
SALES FRANCE & INTERNATIONAL

—

christopheprime@yahoo.fr

T +33 (0)6 30 67 83 25





WWW.LANNOGRAPHICS.COM